

Federal News Service, Inc.
Manual

NetReader version 0.2.0 beta
Local News Server version 0.3.0 beta

Overview: FNS Internet News Delivery System

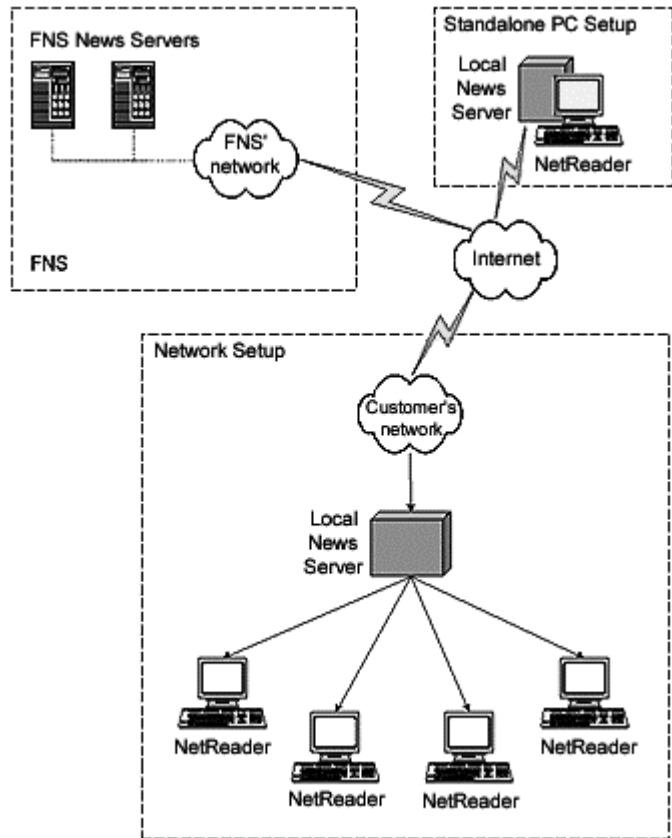
FNS Internet News Delivery System was designed to deliver stories (transcript sections) to users' PCs in real time. It uses TCP/IP and is based on ActivePush™ technology.

It consists of two programs: **Local News Server** and **NetReader**. They work in tandem on a client's network or a standalone computer connected to Internet.

Platforms supported are Microsoft Windows 95/98/NT/2000.

Local News Server acts as a gateway between local clients (NetReader) and FNS main News Server.

We recommend that Local News Server be installed on a dedicated machine (*Pentium 166 or better, with at least 32Mb RAM*), although it can work together with NetReader on the same PC (*which has to have at least 64MB RAM*).



NetReader is a program that runs on a user's PC; it displays stories (transcript sections) in real time, as they come; categorizes them based on user defined keywords; searches, prints and emails individual sections or whole transcripts, and much more.

1: Install the Local News Server

At the machine that will act as a server, point your web browser to <http://www.fmsg.com/download/netreader> . Click on the file called **localnewsserver.exe**. If you are using Internet Explorer 4.x or higher, select "open this file/run from current location" and the install process will begin automatically. If you are using Netscape you will be prompted to save the file, usually your C: drive. Save the file to the local drive and then execute the file from the saved location. Follow the on screen instructions.



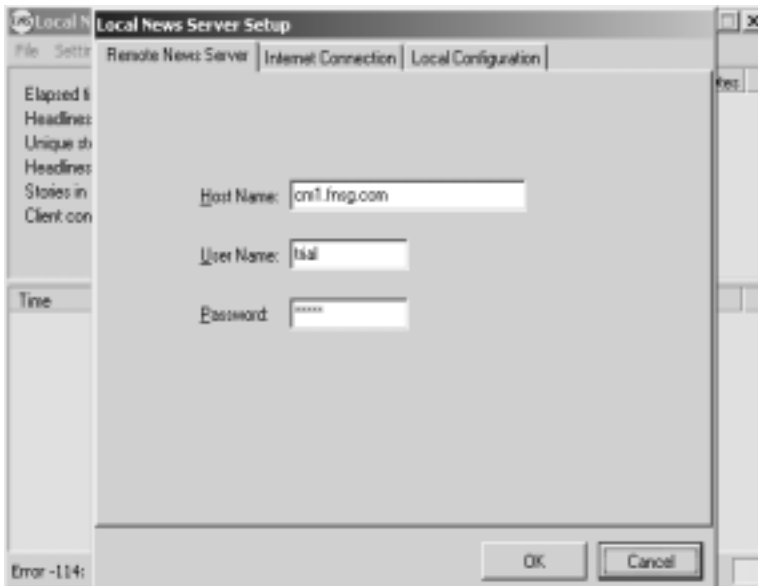
The program will install all the necessary files for the Local News Server to operate. It will also create a shortcut in the startup program group. When the program is first run it will appear minimized. After installing the software, look in the lower right hand side of you screen. You will see a yellow icon with LNS on t next to the time. Double-click this to open the Local News Server. Before performing any NetReader install, the NewsServer must be configured.

2: Setting up the Local News Server

The Local News Server is a separate program that runs constantly in the background collecting wires stories as they come in and sending them to a database.

The Remote News Server

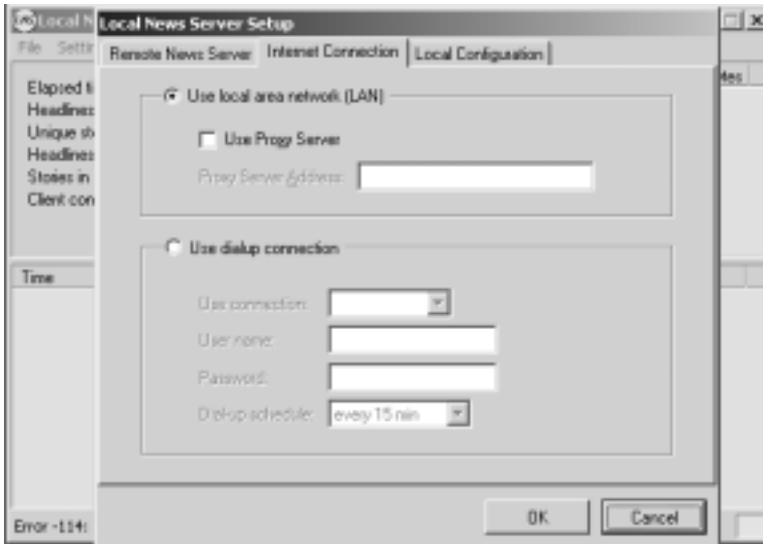
The **Remote News Server** tab is used to configure the Local News Server to connect to a remote computer that will be supplying data to your Local News Server. Make note of the name of the machine that this software is being installed on (See section 9 for information on finding a machine name). You will need it to configure the NetReader.



Run the program by double-clicking on its icon in the tray. Click on **Settings**, then on the **Remote News Server** tab.

1. In the **Host Name** field place cm1.fnsg.com
2. In the **User Name** field place the user name given to you by FNS Customer Service.
3. In the **Password** field place the password given to you by FNS Customer Service. The password will not be visible. You will only see a series of asterisks.

Internet Connection

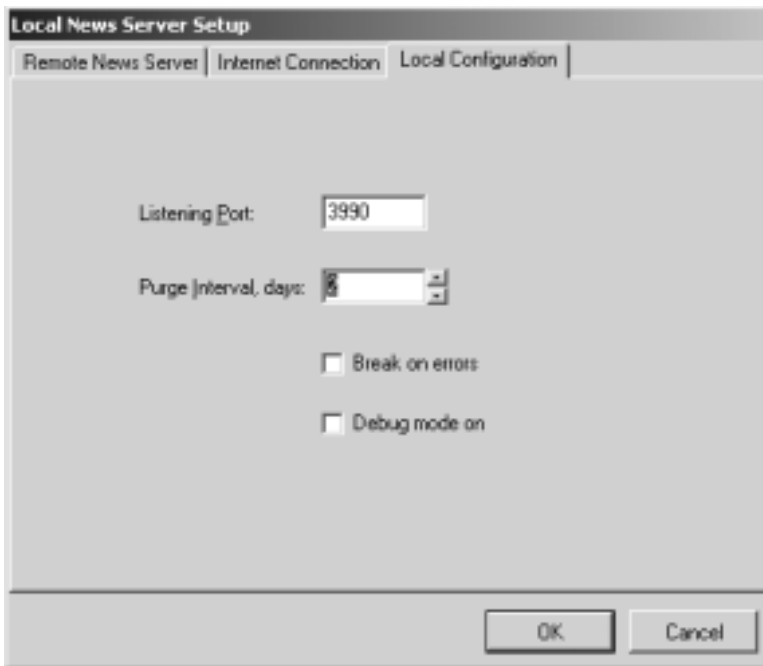


The **Internet Connection** tab specifies how your Local News Server will connect to the **Remote News Server**. It can either be through an always on Internet connection, as through a LAN or DSL line, or through modem dialup.

If you have an always on connection to the internet, make sure that the LAN option is chosen. If you are using a Proxy server, check the Use Proxy Server box and fill in your proxy server address.

Local Configuration

The **Local Configuration** tab specifies local options for the Local News Server.



The **Listening Port** is the port that the NetReader will look at for data from the Local News Server. This is a preconfigured option. **The default is 3990.**

You can also set the **purge interval** from 1 day to 30 days. The **purge interval** is how many days' stories are kept before they are "purged" from the system. The **purge interval** set on the Local News Server will be the same on each NetReader workstation. So if the interval is set to 10 days on the Local News Server, the interval will be 10 days on the NetReader workstation.

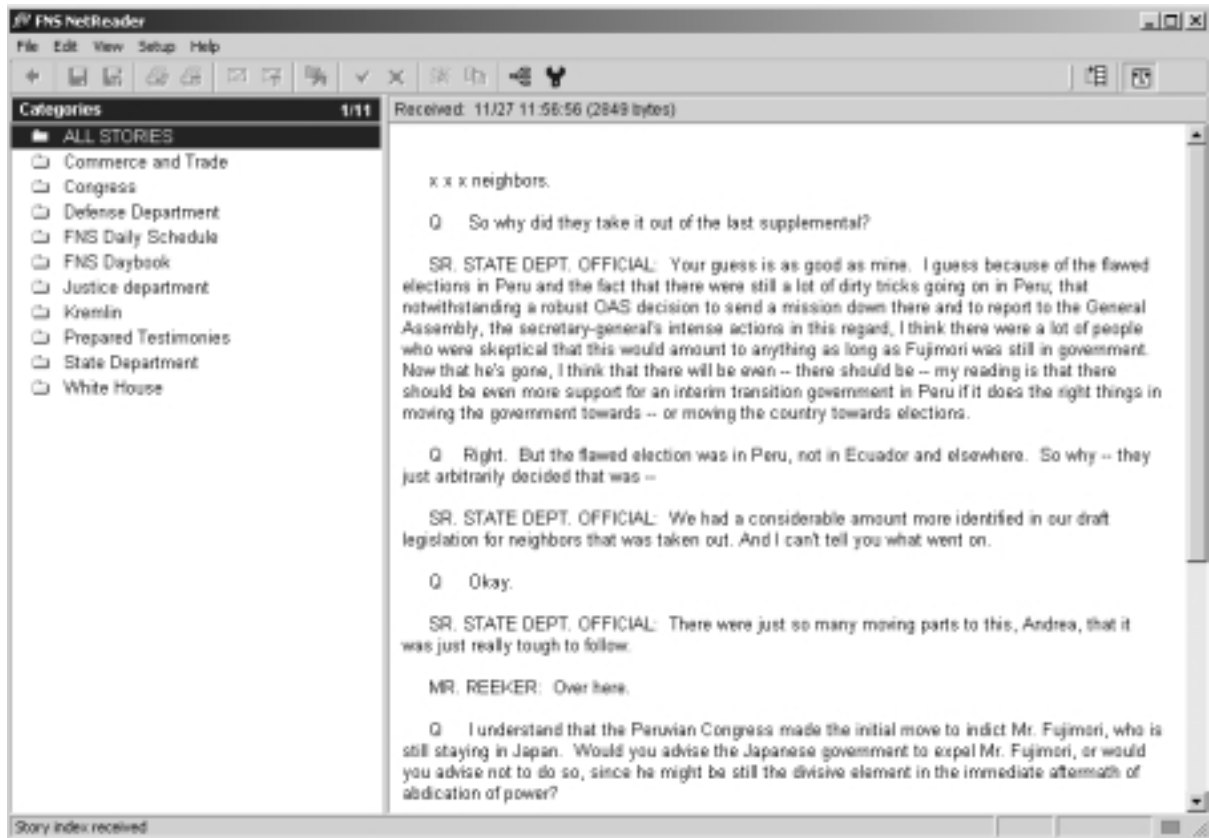
Stories are located in the C:\FNS\FNS News Server\DATA folder on the local machine if you used the default settings during install.

3: Installing the NetReader Software

At the machine that will be using the NetReader, point your web browser to <http://www.fnsg.com/download/netreader> . Click on the file called **netreader.exe**. If you are using Internet Explorer 4.x or higher, select "open this file/run from current location" and the install process will begin automatically, if you are using Netscape you will be prompted to save the file to. Save the file to the local drive and then execute the file from the saved location. Follow the on screen instructions.

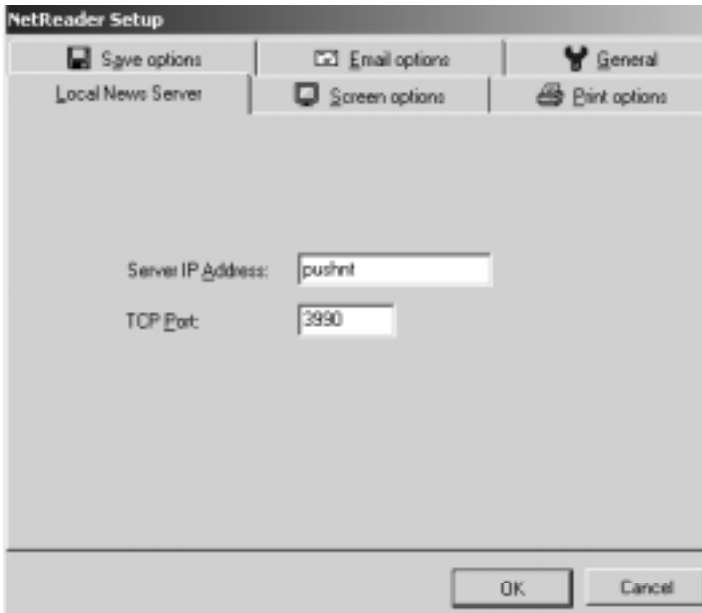
An icon will be created and placed on the desktop. Double-click on the icon to start the NetReader program.

This is the first screen you will see. NetReader must be configured before it's first use.



Configuring the NetReader

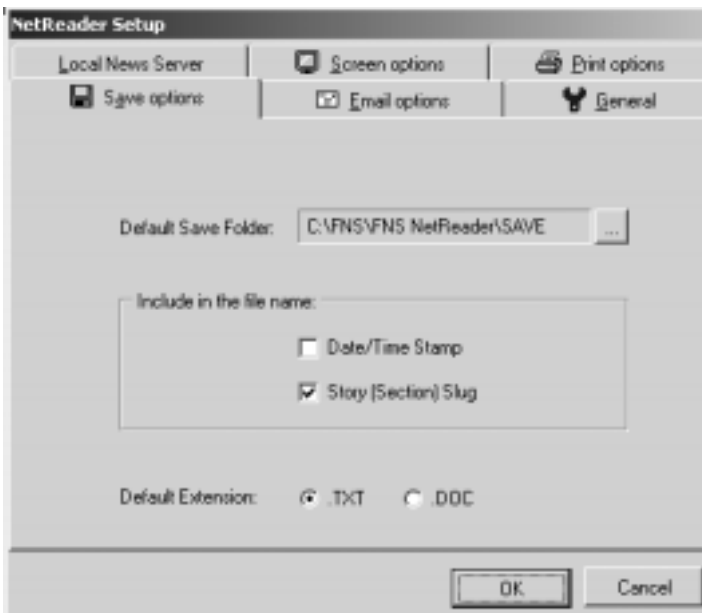
NetReader needs configured to work in your environment. To access the setup options click on the **Setup** menu option and the **Preferences** option or click the  icon. Then click the **Local News Server** tab



1. In the **Server IP Address** field fill in the name of the machine that is running the Local News Server. You should have this information from Section 5.
2. Make sure that the **TCP Port** is the same as the listening port on the Local News Server. The default is 3990

Save Options


Click on the **Save Options** tab to access the default save options.

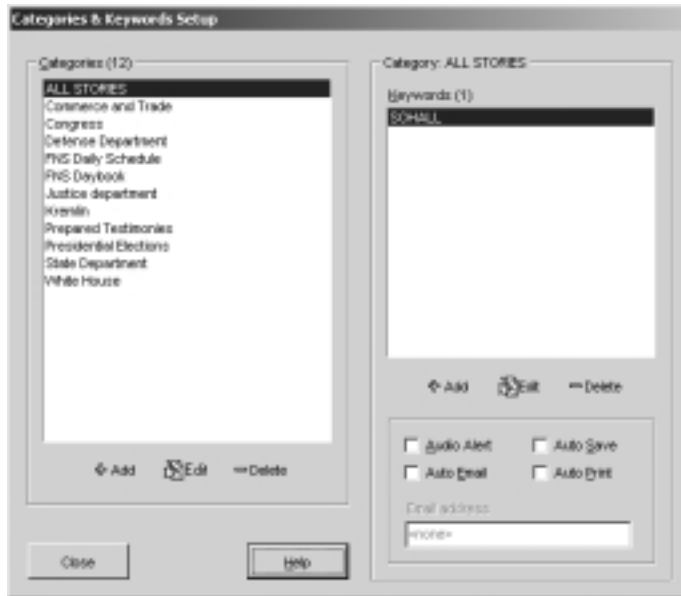


1. Choose your **Default Save Folder**.
2. Choose whether or not you want a date/time stamp to be applied to saved stories.
3. Choose the default format for saved stories – text or doc.

NetReader is now set up with a very basic configuration.

Configuring Categories and Keywords

To configure categories and keywords click on the Setup menu option and select Keywords or you can click on the  icon.



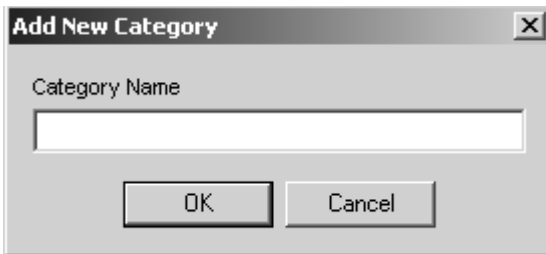
NetReader comes with several **Categories and Keywords** preset.

Due to your subscription, you may not receive all the Categories listed. However, do not delete the preset Categories and Keywords without assistance from FNS Customer Service. Deleting these may affect the operation of NetReader.

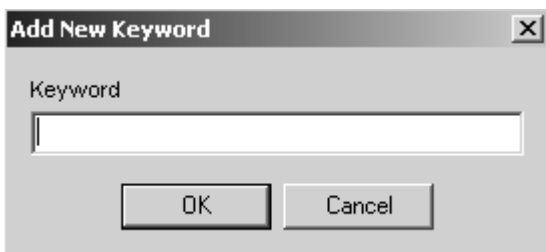
Categories are broad topic areas. Keywords enable you to define the contents of your category.

To add a category click on the Add button under the Categories box.

You will be prompted to enter a category name



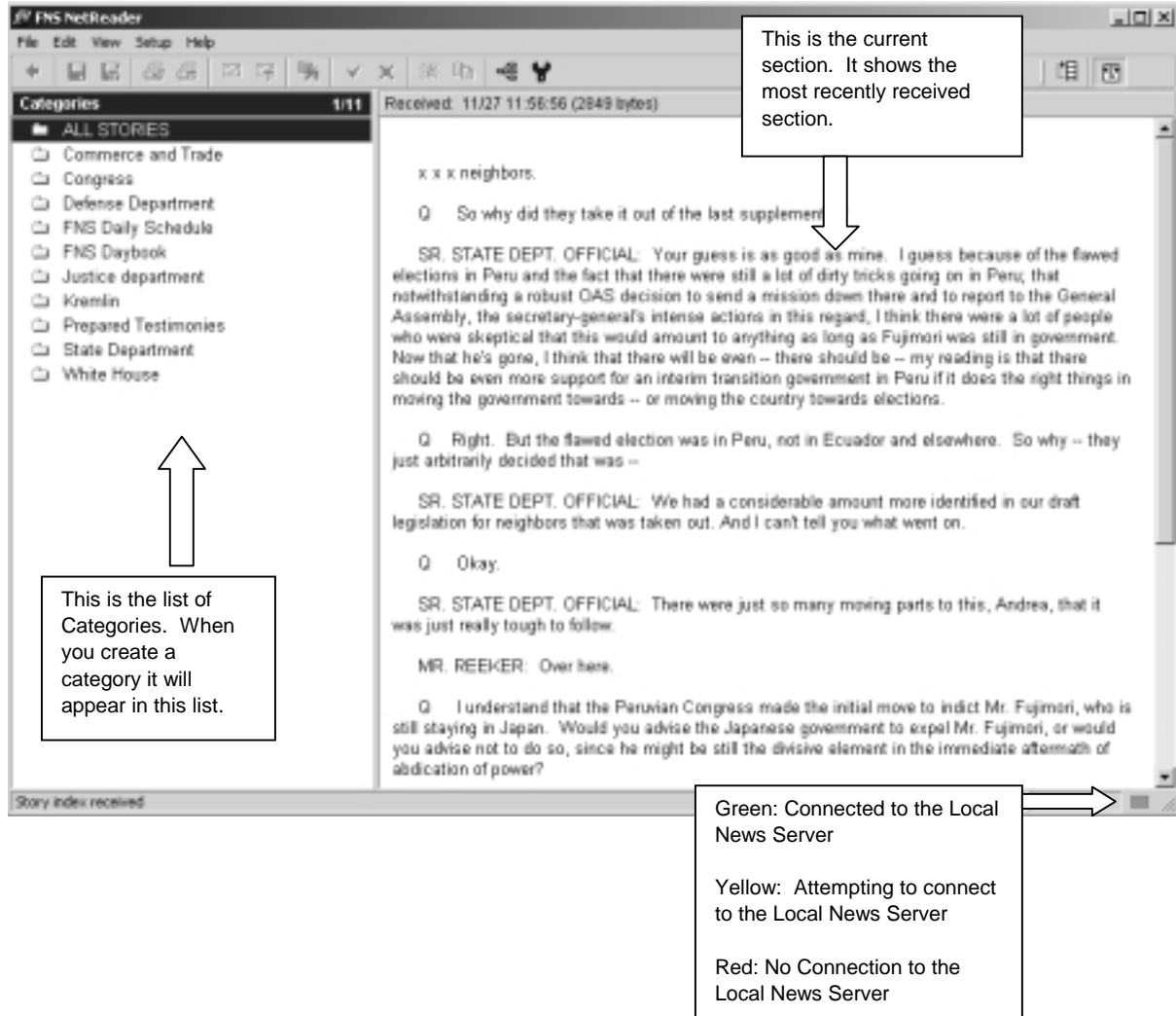
Now you can add Keywords to your new Category. Make sure the category you are adding is selected. Then click the Add button under the Keywords box. You can enter only one keyword at a time.



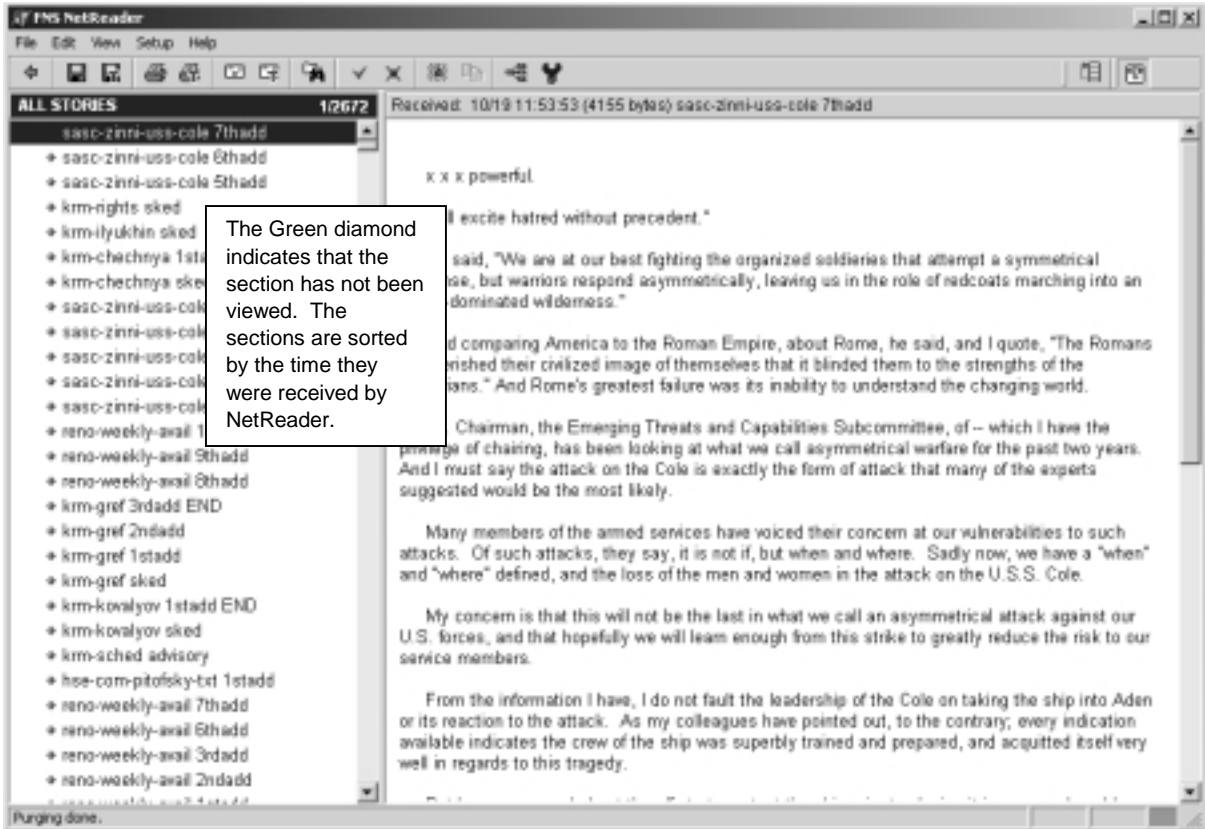
After entering your keyword, which can be any word you want to use (for example you could use China or Clinton). Click on OK. When you have finished adding/editing Categories and Keywords click Close. You will be prompted to re-index the stories. This allows your new/changed keywords to be matched to any possible hits in the stories. Keywords are highlighted in the text of the transcript.

4: Using NetReader

This is the screen you see when opening NetReader. Notice how the icons below the menu bar are grayed out. They will not become active until a category is double-clicked.



After double-clicking one of the categories, your screen should look similar to this. Notice that the icons under the menu bar are now active, no longer grayed out.



This button allows you to go back to the previous screen. Similar to the back button on a web browser.



The red check will mark the highlighted section as important.



The green dot with the X, marks all stories as read.



This button allows you to highlight an entire section.



This button allows you to copy the selected text to the clipboard for pasting into other programs such as Microsoft Word.




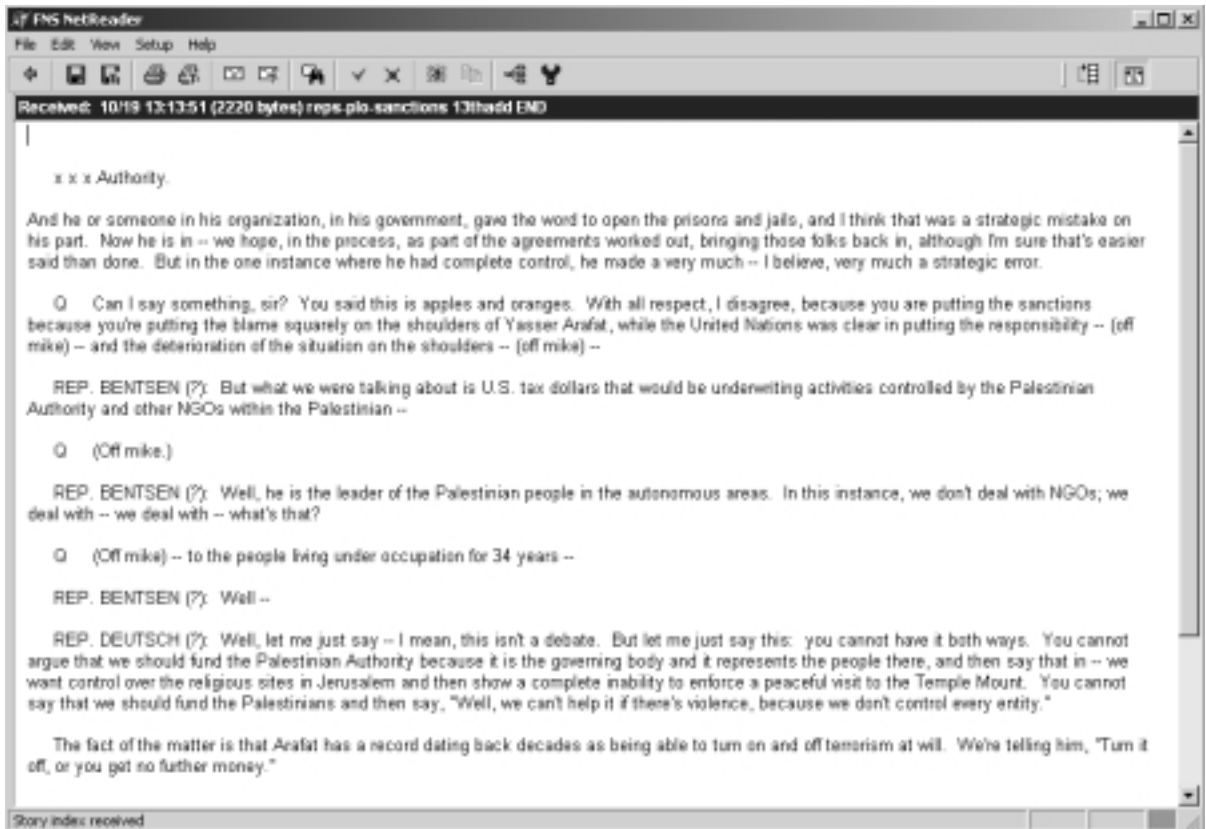
This button turns auto-advance on or off. If auto-advance is on the latest item is highlighted and shown. If auto-advance is off, the latest slug is added to the top and you will need to scroll up to see the latest section.



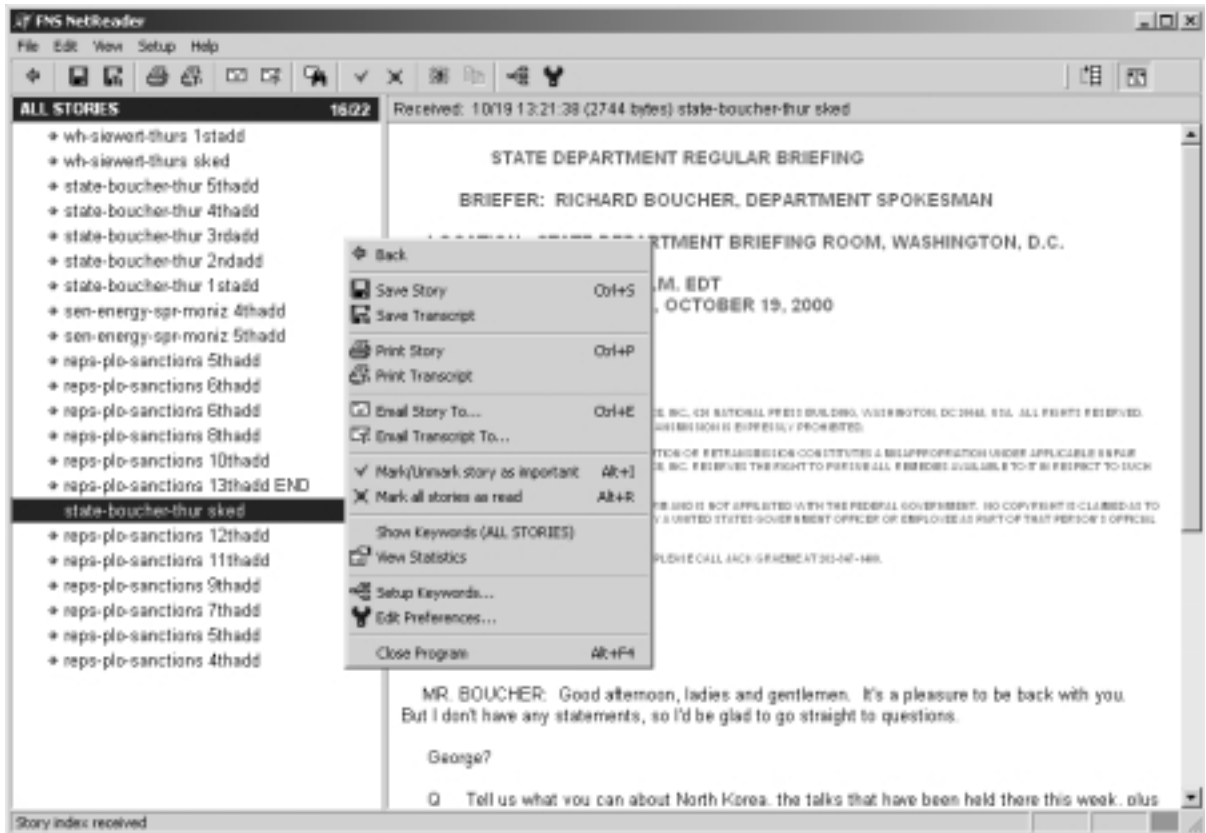
This turns auto-formatting on and off. On the text fills the screen. Off the text is displayed as-is.

Full Screen

Double-clicking a slug or hitting the Enter key gives a full screen view of the section. To return to the split screen simply click the  button or hit ESC key.





Right Click

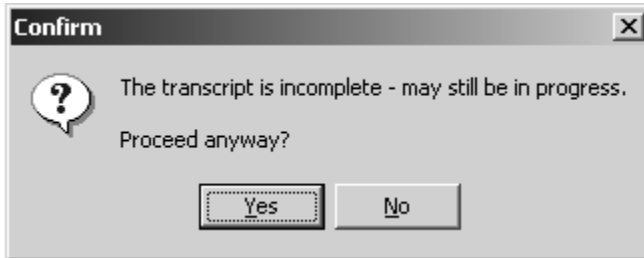


How to Save

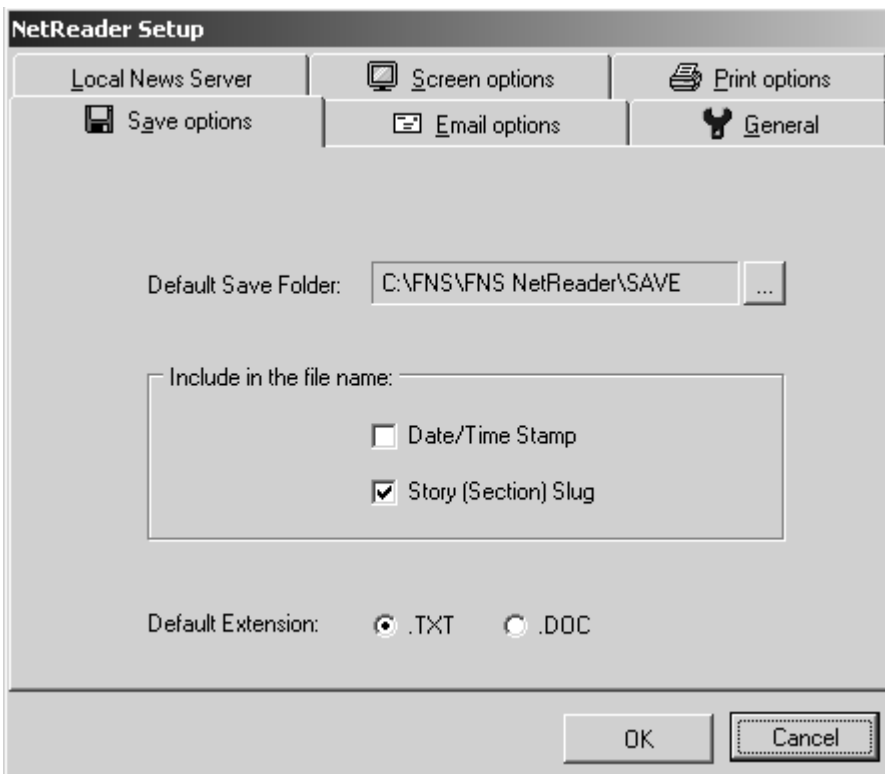
NetReader can save stories two ways.

 Click this icon to save just the current section. The default save location is specified in NetReader Setup on the Save Options tab.

 Click this icon to save the entire transcript. If the transcript is not complete you see the following message:



If you wish to save the partial transcript click on Yes. If not click on No and you will be returned to the section.



This is the screen you will see when you click on the Setup icon. You can set the default Save Options here.

How to Print

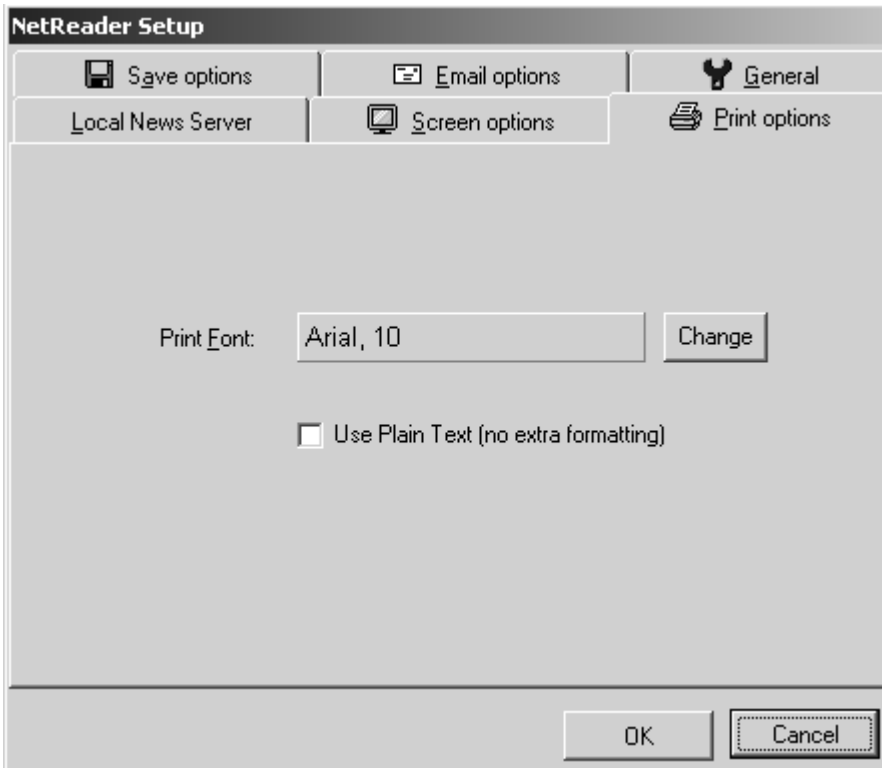
NetReader has several printing options. **NetReader uses the Windows default printer. No other printer driver is necessary.**



This option prints the highlighted section



This option prints the entire transcript. If the transcript is not complete you will be prompted to confirm the operation.



This is the Print Option screen. You can set the Print Font or you can choose to use plain text.

How to Email

A new feature in NetReader is Email. This option allows you to email the entire transcript or just a section.



Clicking this icon emails the highlighted section. You will see this screen:

A dialog box titled "Email Story To..." with a close button (X) in the top right corner. The text inside reads "Enter email address or click OK to use default:". Below the text is a text input field. At the bottom of the dialog are two buttons: "OK" and "Cancel".

Fill in the email address and click OK.



Clicking this icon emails the entire transcript. You will see this screen:

A dialog box titled "Email Transcript To..." with a close button (X) in the top right corner. The text inside reads "Enter email address or click OK to use default:". Below the text is a text input field. At the bottom of the dialog are two buttons: "OK" and "Cancel".


Fill in the email address and click okay.

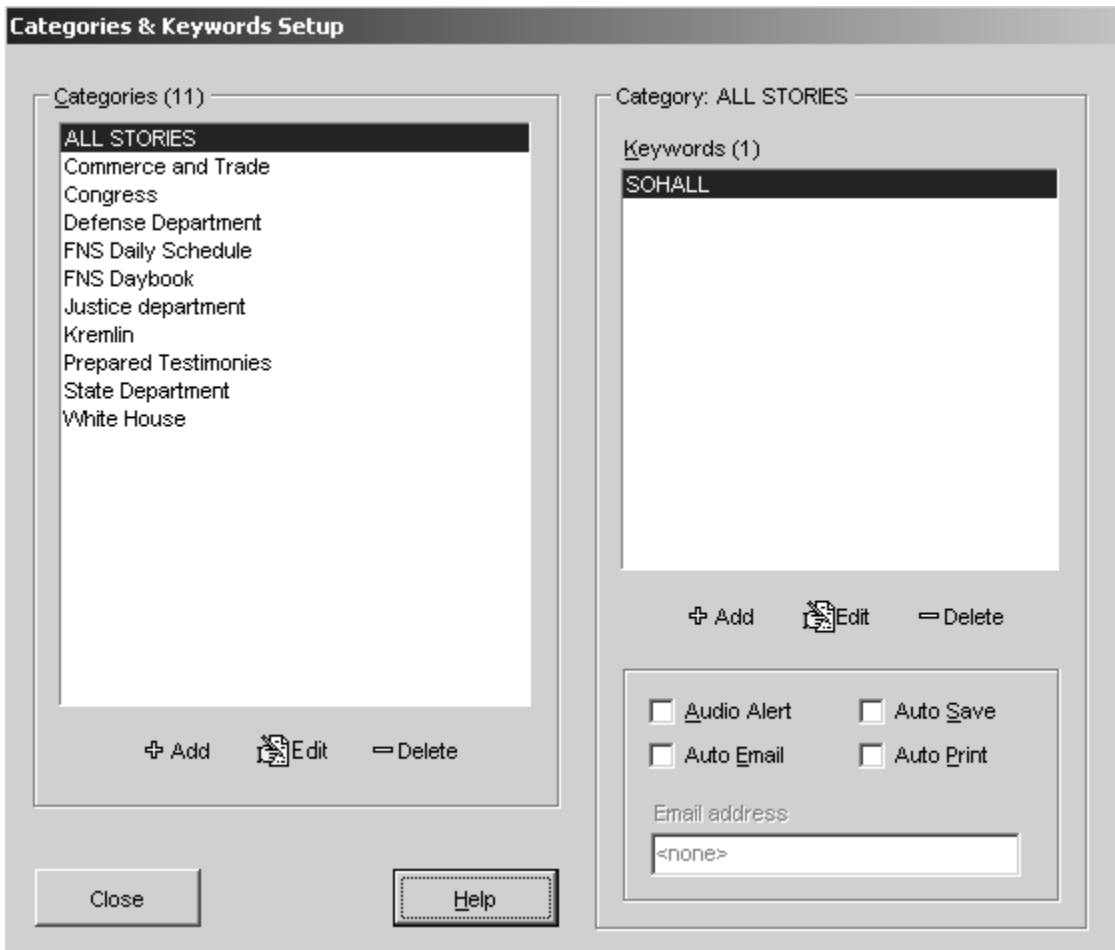
The "NetReader Setup" dialog box, which is a multi-tabbed window. The tabs are: "Local News Server", "Screen options", "Print options", "Save options", "Email options", and "General". The "Email options" tab is currently selected. Inside this tab, there are three text input fields with labels: "SMTP Server IP Address:", "Default Email Address:", and "'From:' Email Address:". At the bottom of the dialog are two buttons: "OK" and "Cancel".

Ensure that your Email Options are configured in Preferences. You need to fill in your email address in the "From" section. For your SMTP sever address, refer to your Network Administrator or Internet Service Provider. You can fill in the default email address if you only send to one address or the address you use most.

Automatic Functions

NetReader can automatically perform print, email, and save functions. If you have a sound card NetReader will give an audible tone when a section is received.

To enable these features click on the Keywords icon  to access the Categories and Keywords Setup screen. These features are category independent – meaning the options you set for one category will not be applied to the others. These options are not globally set.




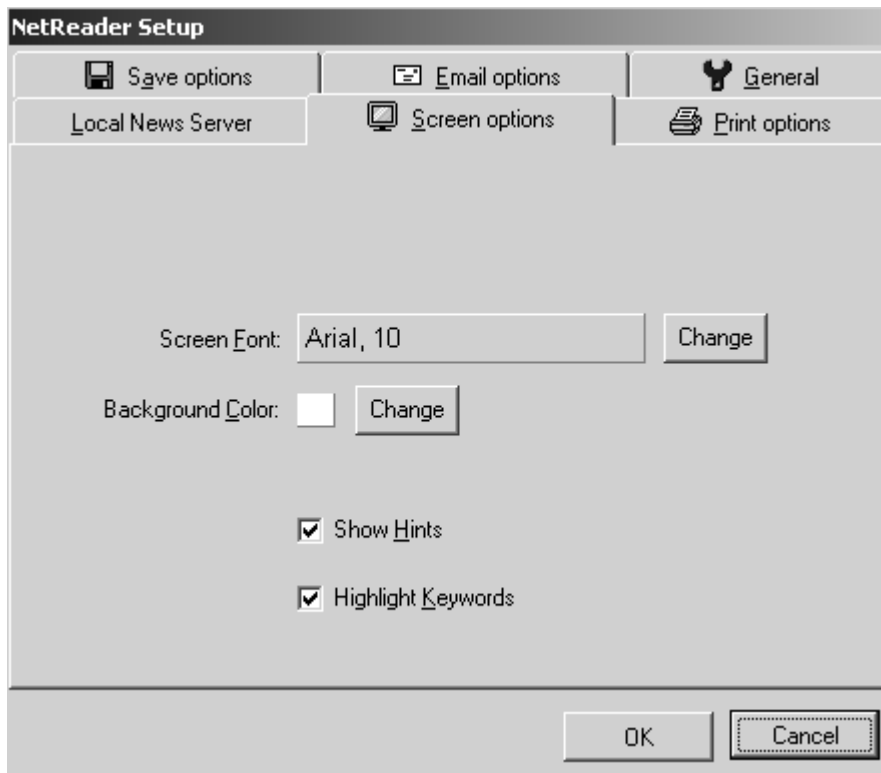
Click any or all of the check boxes to activate these features. These features use the defaults that are setup in Preferences.

After Selecting Auto Email, the Email address box becomes active and requires an email address.

5: Changing the look of NetReader

Screen Options

Changing the look of NetReader is accomplished using the Screen Options tab under Preferences. Click on the  icon to access the NetReader Setup screen.



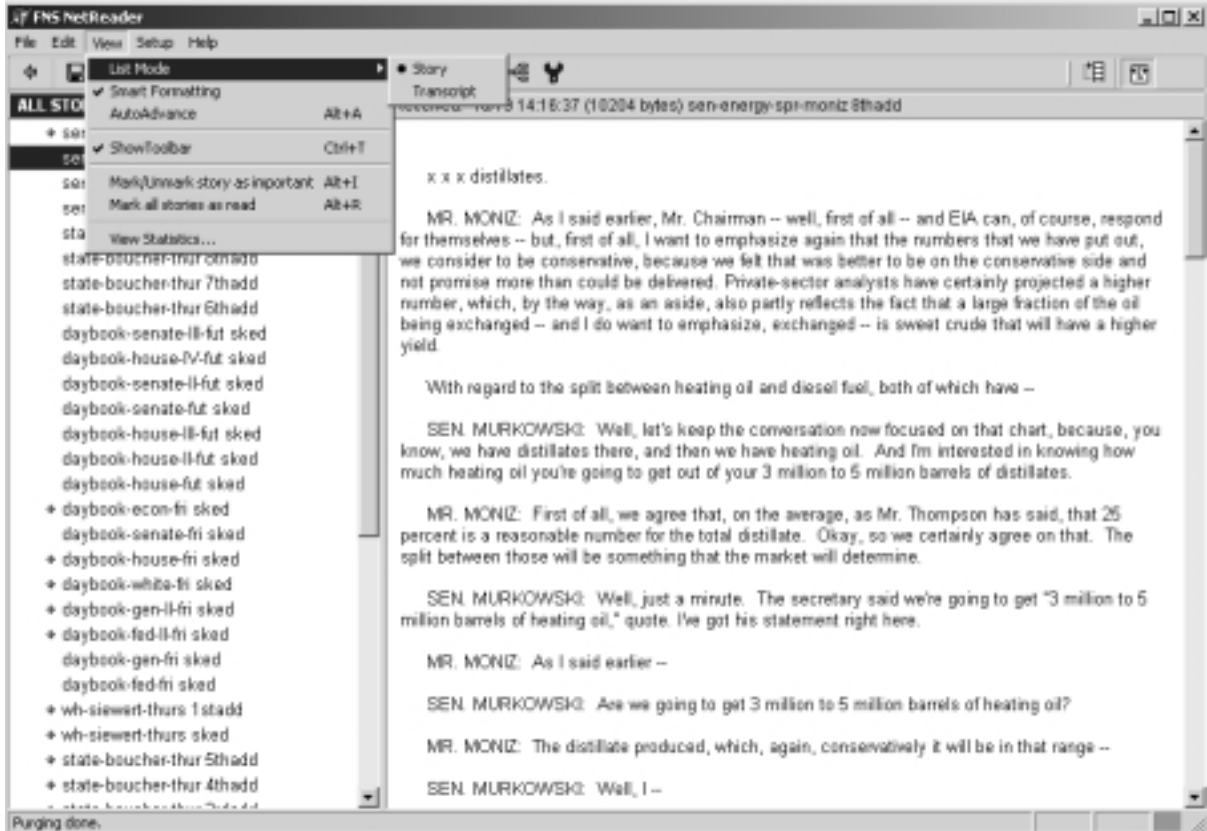
You can change the size of the screen font or the background color to add a more personal feel to NetReader.

If Show Hints is checked, any time your mouse is placed on an icon you see a brief statement telling what that particular item does.

If Highlight Keywords is checked the keywords will be highlighted in the body of the section. If it is unchecked the keywords won't be highlighted.

List Modes

NetReader sorts the slugs that it receives two ways. Access this option by clicking on the View menu option and choosing List Mode.



Story -- the most recently received section will be on the top of the list.

Transcript -- this mode keeps all the pieces of the transcript together. **(Not yet implemented)**

6: Tips and Tricks

Finding a Machine Name

Open either NetReader or the Local News Server. Click on Help and then About. Look at the line labeled "Machine Name".

Troubleshooting:

If you have problems getting the Local News Server to connect to the Remote News Server, try the following:

1. `Pi ng cm1. fnsg. com`

If it doesn't work, check TCP/IP and/or DNS

2. `Tel net cm1. fnsg. com 2190`

It should connect with a blank screen. Then, if you hit 'Enter', it should disconnect. This would be an indication of a workable configuration.

If it can't connect at all, check the local firewall and make sure it doesn't block port 2190.

3. *login name and password are case sensitive (e.g. "Dallas" is not the same as "dallas"). Therefore, make sure they are entered correctly.*
4. *If you have a proxy server make sure that the Proxy Server option is set and that you have filled in the address of your proxy server.*
5. *If you have a firewall make sure that ports 2190 and 3010 are open.*

Contact Information:

If you have questions or problems, please call 202-347-1400 and ask for Customer Service.